

*The long
and short
of it -*

If you haven't been getting your regular supply of "Player's" remember there's a very good reason. More are being smoked, and although we are making more than ever before, demand still surpasses supply. Will you help us to reduce this shortage by cutting down your 'smokes' (for a while) to enable shops to rebuild stocks and so scrap those depressing notices "No Cigarettes."



EXHIBITION OF PAINTINGS BY FIREMEN ARTISTS

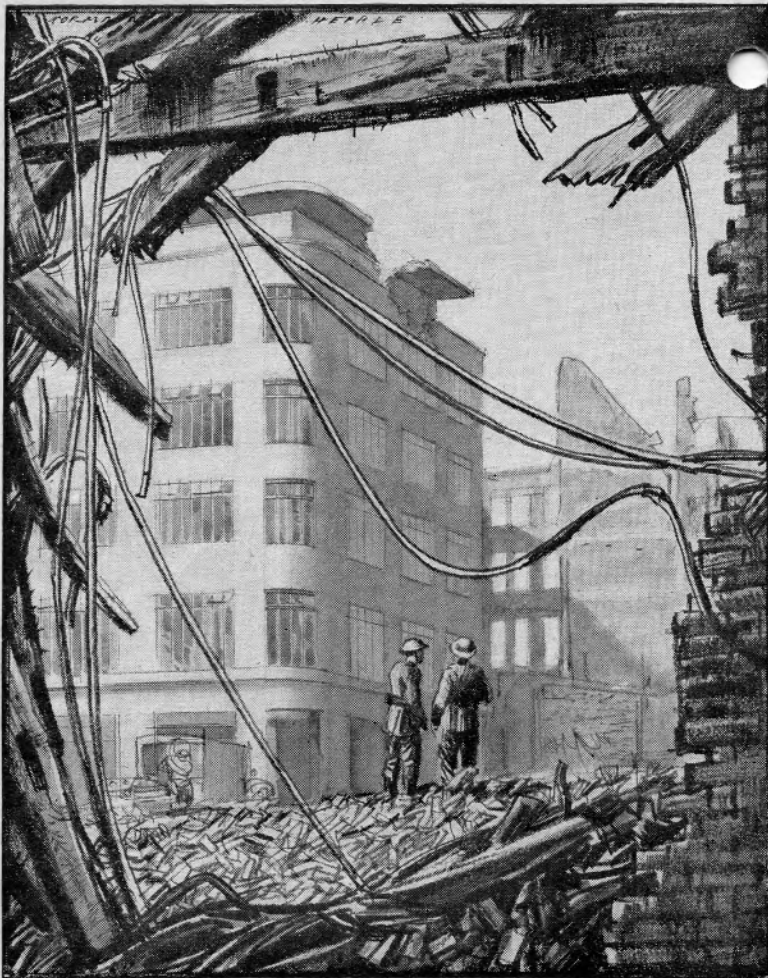
In Aid of The London Fire Service Benevolent Fund
(Registered under War Charities Act, 1940)

AT THE
ROYAL ACADEMY
BY COURTESY OF THE PRESIDENT
AND COUNCIL

AUGUST

1941

N.C.C. 554



“Yes, it got a direct hit, but it’s a steel building, I saw them putting it up.”

BRITISH STEELWORK ASSOCIATION,
Steel House, Tothill Street, Westminster, S.W. 1.



FOREWORD

BY

Mr. F. W. JACKSON, C.B.E., D.S.O.,

Chief Commander, London Fire Force.

President of the London Fire Service Benevolent Fund.

The first Exhibition of work by Firemen Artists attracted great interest. Although quite a small show, it was visited by 30,000 people in three weeks in London, and by 90,000 people during the same period in Washington, U.S.A. It is now in Canada.

It is hoped that the present Exhibition will be seen by the people of other great overseas nations in the British Commonwealth. Supported by photographs and cinematograph films, it may convey some idea of the Mother Country's trials and fortitude.

These pictures are painted in the Firemen's spare time. Firemen train and exercise and keep their apparatus in good order, but they have, when there are no "blitzes," long hours of waiting. This spare time they devote to recreation of all kinds—open-air sport when the weather is fine and the nights are short; indoor games, dances and concerts when the "blackout" is long. There are also classes in all manner of useful subjects and a great deal of voluntary work is undertaken. For example, Firewomen knit socks and pullovers for the men and the men make toys and equipment for "evacuated" children. In this same spirit of service to others, the Artists hope that their work may benefit the London Fire Service Benevolent Fund which has helped some thousands of firemen in distress and need during the war, and spread its wings over the many thousands of Firemen in suburban districts, who have joined with the inner-London men in one united Greater London Fire Service.

"There's Nothing Like" the 14-Years Old Quarterly
COUNTRYMAN

says "The Times"

Published in a Cotswold Hamlet, Goes to the Ends of the Earth.

ARMY: "My *Countryman* went with me through the Libyan campaign and helped me to forget the desert and the discomforts of battle. Deep gratitude to you."

NAVY: "To those of us who are missing the joys of our countryside, the *Countryman* provides great consolation and delight."

R.A.F.: "We look forward to each *Countryman* because it brings a breath of sanity. It must be healing many War-wounded spirits."

HOME: "No words can describe the pleasure I get from the *Countryman*."

OVERSEAS: "You can imagine the joy of it in a land of deserts, oil wells and heat."

By every post, in a thousand different ways, from all parts of the world, subscribers send heartfelt appreciation of the solace and refreshment given by this magazine which comes from the country.

Of 20,000 Subscribers, 1 in every 20 is FOR LIFE!



The *Countryman* Office is at Idbury Manor, Kingham, Oxford, which is why it is a really rural periodical.

WHATEVER THE NEWS, THERE'S PEACE IN "THE COUNTRYMAN."

EXHIBITION OF PAINTINGS
BY FIREMEN ARTISTS

In Aid of The London Fire Service Benevolent Fund
(Registered under War Charities Act, 1940)

AT THE
ROYAL ACADEMY

BY COURTESY OF THE PRESIDENT
AND COUNCIL

GALLERY I.

OILS (Nos. 1-37).

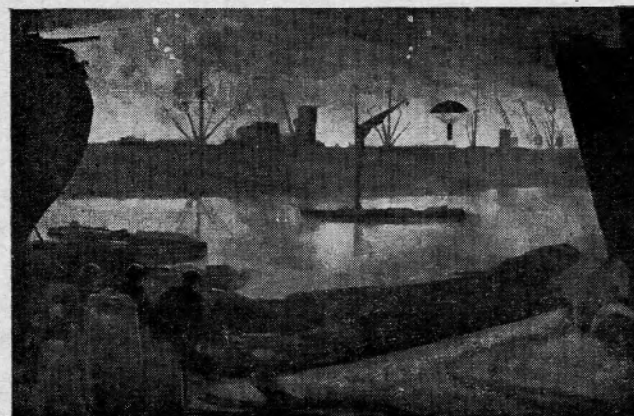
- | | | |
|----|--|--------------------------|
| 1 | All Pumps to Whitechapel. | <i>Reginald Mills</i> |
| 2 | Mr. Alnutt, 44 Station, London
Fire Force. | <i>Bernard Hailstone</i> |
| 3 | A Dockland Back Street | <i>Bernard Hailstone</i> |
| 4 | Collecting Hose, South Wharf | <i>W. S. Haines</i> |
| 5 | High Explosives Falling in Fire,
Scrubbs Lane | <i>Leonard Rosoman</i> |
| 6 | And so to Bed | <i>Paul Dessau</i> |
| 7 | Demolition After the Fire, Upper
Thames Street | <i>Bernard Hailstone</i> |
| 8 | A Dispatch Rider | <i>W. Matvyn Wright</i> |
| 9 | Wren Again | <i>W. Matvyn Wright</i> |
| 10 | Major F. W. Jackson, C.B.E.,
D.S.O., Chief Commander, London
Fire Force. | <i>Norman Hepple</i> |
| 11 | River Service | <i>Stanley Froude</i> |
| 12 | Study of a Fireman. | <i>Bernard Hailstone</i> |
| 13 | Interruption | <i>Paul Dessau</i> |
| 14 | Cooling Down—Coffee Warehouse | <i>Norman Hepple</i> |
| 15 | Cooling Off, Upper Thames Street | <i>J. Wallace Orr</i> |
| 16 | Rescue from the Fourth Floor | <i>W. Matvyn Wright</i> |

- | | | |
|----|---|---------------------------|
| 17 | Fireman Walking through Smoke and Water, Scrubb's Lane .. | <i>Leonard Rosoman</i> |
| 18 | Lt.-Comdr. J. H. Fordham, R.N., rtd. National Fire Service .. | <i>Bernard Hailstone</i> |
| 19 | Double Disaster | <i>Paul Dessau</i> |
| 20 | An Evening in the City, April, 1941 .. | <i>Bernard Hailstone</i> |
| 21 | Mr. G. V. Blackstone, G.M., London Fire Force | <i>Paul Dessau</i> |
| 22 | Incident in Bermondsey | <i>Paul Dessau</i> |
| 23 | Harmonie du Soir | <i>W. Matvyn Wright</i> |
| 24 | Wind Blowing through a Jet of Water, Upper Thames Street .. | <i>Leonard Rosoman</i> |
| 25 | Parachute Bomb | <i>W. Matvyn Wright</i> |
| 26 | Station Officer Oliver, 44 Y Station .. | <i>Bernard Hailstone</i> |
| 27 | Menace : I "Overture" | <i>Paul Dessau</i> |
| 28 | Menace : II "Crescendo" | <i>Paul Dessau</i> |
| 29 | Menace : III "Rallentando" | <i>Paul Dessau</i> |
| 30 | Menace : IV "Diminuendo" | <i>Paul Dessau</i> |
| 31 | A London Firewoman | <i>Bernard Hailstone</i> |
| 32 | In Action on the Wharves | <i>J. Kingsley Sutton</i> |
| 33 | Steam Rising from Debris, Upper Thames Street | <i>Leonard Rosoman</i> |
| 34 | St. Catherine's Docks" | <i>Leonard Rosoman</i> |
| 35 | Collapsing Ceiling, Shoe Lane | <i>Leonard Rosoman</i> |
| 36 | Lt.-Comdr. K. N. Hoare, R.N. rtd., London Fire Force | <i>Fredk. J. Smith</i> |
| 37 | St. Paul's from Cannon Street | <i>Norman Hepple</i> |

GALLERY II.

OILS (Nos. 38-97).

- | | | |
|----|---|--------------------------|
| 38 | Ruins at 42 W Station | <i>Bernard Hailstone</i> |
| 39 | At High Tide | <i>W. S. Haines</i> |
| 40 | A Leading Fireman of the London Fire Force | <i>Reginald Mills</i> |
| 41 | City Silhouette—from a Balcony at Headquarters, London Fire Force | <i>H. Manwaring</i> |
| 42 | A.A. Guns in Action | <i>J. Wallace Orr</i> |
| 43 | Civil Defence Review, Hyde Park, 14th July, 1941 | <i>Reginald Mills</i> |

MAJOR F. W. JACKSON, C.B.E., D.S.O. *Norman Hepple*

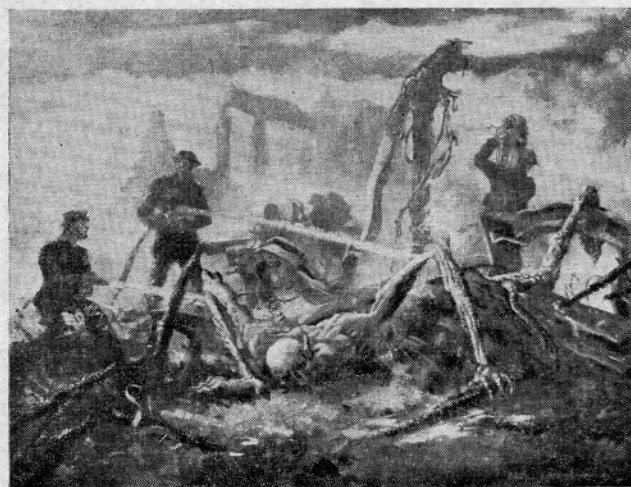
PARACHUTE BOMB

W. Matvyn Wright

- | | | |
|----|--|----------------------------|
| 44 | St. Bride's Testimony to Nazi Culture (Damping Down) .. | <i>Leslie Curr</i> |
| 45 | Fireman Woodward of Emergency Fire Boat 4 | <i>W. S. Haines</i> |
| 46 | At the very Heart of Flame .. | <i>Stanley Froude</i> |
| 47 | Harrow School Speechroom, October, 1940 | <i>Philip North-Taylor</i> |
| 48 | Consultation | <i>Paul Dessau</i> |
| 49 | Auxiliary Fire Floats in Action .. | <i>F. T. W. Cook</i> |
| 50 | Over the River | <i>Paul Dessau</i> |
| 51 | The Grass Widower.. .. . | <i>Francis Nichols</i> |
| 52 | Smouldering Ruins of St. Andrew's Church, High Holborn | <i>Bernard Hailstone</i> |
| 53 | Firewoman Margaret Hay, B.E.M., London Fire Force | <i>Bernard Hailstone</i> |
| 54 | Rescued | <i>Reginald Mills</i> |
| 55 | The Flooding Tide | <i>W. S. Haines</i> |
| 56 | Mr. Denyer (King's Medal), 80 Station | <i>W. Matvyn Wright</i> |
| 57 | Fire Watching Post.. .. . | <i>W. S. Haines</i> |
| 58 | An A.T.C. and Pump | <i>W. Matvyn Wright</i> |
| 59 | Casualty in the Battle of the Flames | <i>J. Kingsley Sutton</i> |
| 60 | Journey's End | <i>W. S. Haines</i> |
| 61 | City Fires seen from Norwood .. | <i>H. Manwaring</i> |
| 62 | Incendiaries on Tower Bridge .. | <i>W. Ewer</i> |
| 63 | Firemen in Whitecross Street .. | <i>Norman Hepple</i> |
| 64 | Cooling Down in a Cold Storage Warehouse, Dockland | <i>Leonard Rosoman</i> |
| 65 | Convoy Arriving at a Fire | <i>Brian Gilles</i> |
| 66 | Two Men Trapped in a Vault | <i>W. Matvyn Wright</i> |
| 67 | Queen Victoria Street | <i>Paul Dessau</i> |
| 68 | Self Portrait | <i>Paul Dessau</i> |
| 69 | Destruction of Chelsea Old Church, 1941 | <i>J. E. Daniels</i> |
| 70 | Hyde Park Display, 1941 | <i>W. Matvyn Wright</i> |
| 71 | Bomb Blast and Debris, Queen Victoria Street | <i>Leonard Rosoman</i> |
| 72 | House Collapsing on Two Firemen, Shoe Lane.. .. . | <i>Leonard Rosoman</i> |
| 73 | Ruins of a Wren Church in Cannon Street | <i>Bernard Hailstone</i> |
| 74 | The Morning After | <i>Paul Dessau</i> |
| 75 | Dawn in Lisson Grove | <i>J. Wallace Orr</i> |



THE GOOD SAMARITANS

Reginald Mills

MENACE: IV. "DIMINUENDO"

Paul Dessau

110-1

76	In a Church Chancel	<i>J. Wallace Orr</i>
77	A Fire	<i>W. Matvyn Wright</i>
78	City Warehouses, 1940	<i>Leslie Baker</i>
79	A Part of the City	<i>W. Matvyn Wright</i>
80	Fireman Roberts, 40 Station	<i>Norman Hepple</i>
81	3 a.m. on the Plaistow Road, East End (March, 1941)	<i>Leslie Baker</i>
82	Getting to Work	<i>A. E. Turpin</i>
83	Sleepy Fireman	<i>Bernard Hailstone</i>
84	Back Gardens in Bow	<i>Norman Hepple</i>
85	To-day's Portrait	<i>F. T. W. Cook</i>
86	Modern Work in an Old Setting	<i>Charles H. Ree</i>
87	Enemy Eyes	<i>F. T. W. Cook</i>
88	Noisy Nocturne	<i>Norman Hepple</i>
89	Study	<i>W. Matvyn Wright</i>
90	Impressions made at Fire in Wool- wich Road, April, 1941	<i>Bernard Hailstone</i>
91	Christ Church, Newgate Street	<i>Leonard Rosoman</i>
92	Dawn	<i>Norman Hepple</i>
93	Morning Service	<i>F. T. W. Cook</i>
94	Cleaning—Morning After a Blitz	<i>J. Kingsley Sutton</i>
95	Walpurgis Night Scene	<i>W. Matvyn Wright</i>
96	Damping Down in Queen Victoria Street	<i>Bernard Hailstone</i>
97	Damping Down in the City	<i>Reginald Mills</i>

LARGE SOUTH ROOM.

WATER COLOURS AND DRAWINGS (Nos. 98-164).

98	Hose Laying	<i>E. G. Turner</i>
99	Brick Court, Temple	<i>Ronald Dickens</i>
100	Three A.M.	<i>Donald W. Vandy</i>
101	Firemen at Breakfast	<i>M. J. R. Bankes</i>
102	Overhaul at 52 Station	<i>Stanley Jezzard</i>
103	Burnt Out Warehouses	<i>E. Boye Uden</i>
104	Forty Winks	<i>Bessie Byrne</i>
105	Lull Period—Checking Hose	<i>Stanley Dodd</i>
106	Red Lion Square	<i>Norman Hepple</i>
107	Prospect of Woolwich	<i>Norman Hepple</i>



HOUSE COLLAPSING ON TWO FIREMEN *L. Rosoman*



RUINS OF 42 W STATION *Bernard Hailstone*

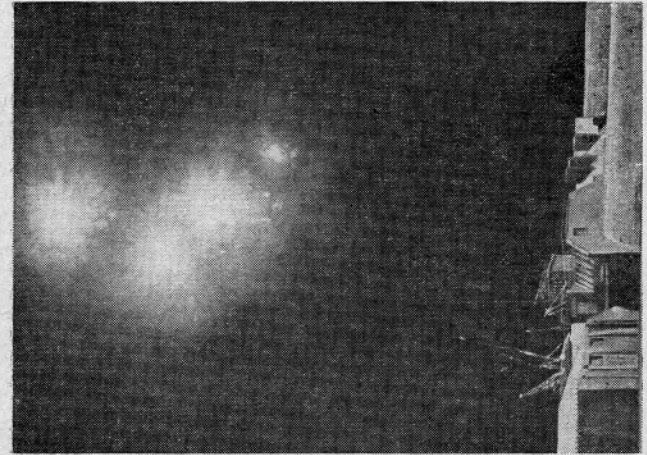
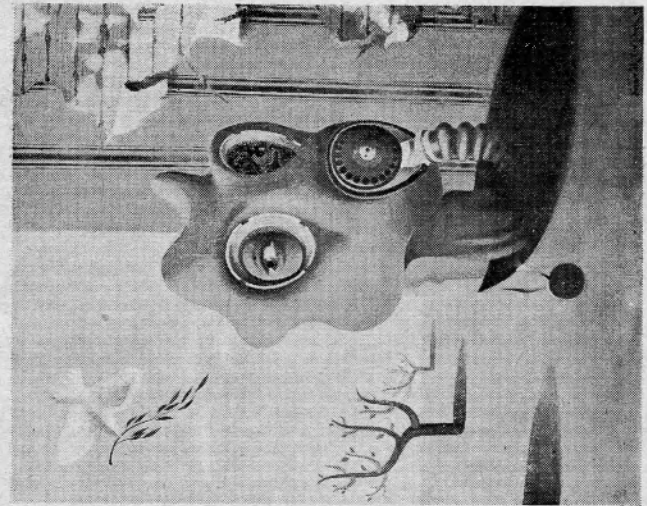
108	Morning Drill	<i>Stanley Froude</i>
109	It's Not Always Easy on the River	<i>Stanley Dodd</i>
110	Damage Near St. Paul's	<i>Ronald Dickens</i>
111	A Local Sub-station	<i>E. Boye Uden</i>
112	Company Officer Mrs. Chivers, 60 Southwark	<i>Mary Pilcairn</i>
113	Fireman Wheeler	<i>Ronald Dickens</i>
114	St. Paul's seen from the Ruins of St. Mary-le-Bow, Cheapside	<i>E. Boye Uden</i>
115	Firemen's Sleeping Quarters	<i>R. T. Horley</i>
116	Station Work Commenced	<i>Julia Lowenthal</i>
117	The Monotony of Cooling Down	<i>Richard Southern</i>
118	Fire Boats Underway	<i>Stanley Froude</i>
119	May—1941	<i>A. C. Tylee</i>
120	St. Andrew's, High Holborn (Damp- ing Down)	<i>E. Boye Uden</i>
121	Syd	<i>John Bryce Mungall</i>
122	East London Warehouses	<i>E. G. Turner</i>
123	Northumberland Wharf, Brentford End, November, 1940	<i>C. Newbold</i>
124	December Dawn	<i>Richard Southern</i>
125	Girders Twisted by Great Heat	<i>Norman Hepple</i>
126	Thames' Side	<i>E. Boye Uden</i>
127	Sketch of Bomb ^y Hole at 66 X Station	<i>Brian Gilks</i>
128	Man Overboard—Drill	<i>Stanley Froude</i>
129	The Good Samaritans	<i>Reginald Mills</i>
130	A Congested City Thoroughfare (Fire Damage)	<i>E. Boye Uden</i>
131	Damping Down	<i>E. G. Turner</i>
132	Portrait of a Fireman	<i>Richard Southern</i>
133	The City Temple	<i>Norman Hepple</i>
134	Cul-de-sac	<i>E. G. Turner</i>
135	Scaffold Dam in Golden Lane	<i>Donald W. Vandy</i>
136	Fireman Palmer	<i>Ronald Dickens</i>
137	River Side	<i>Norman Hepple</i>
138	Study for Portrait of Mr. ^c Denyer (King's Medal) 80 Station	<i>W. Matvyn Wright</i>
139	Fireman Humphries	<i>Enid Abrahams</i>
140	Drill Tower	<i>A. W. Ridge</i>
141	Wilkie	<i>A. E. Speer</i>
142	Bells ! (20 Z)	<i>Enid Abrahams</i>
143	Fireman	<i>Charles H. Ree</i>

144	The London Fire Force Down River	<i>Stanley Froude</i>
145	A Large Fire Near the River	<i>E. Boye Uden</i>
146	Watchroom	<i>Enid Abrahams</i>
147	Writing Home	<i>Richard Southern</i>
148	Emergency Fireboat	<i>Stanley Froude</i>
149	St. Mary-le-Bow, Cheapside	<i>Norman Hepple</i>
150	Fire Blitz from Paternoster Row	<i>Ronald Dickens</i>
151	St. Paul's from Cannon Street	<i>E. Boye Uden</i>
152	Somewhere on the River	<i>S. J. Andrews</i>
153	Relief Crews Arriving at Millbank, May, 1941	<i>E. Boye Uden</i>
154	St. Clement Dane's, Strand, May, 1941	<i>E. Boye Uden</i>
155	After the Fire Blitz, Paternoster Row	<i>Ronald Dickens</i>
156	Listening to the P.M.	<i>Prunella C. Pott</i>
157	Senior Dispatch Rider Johnny Payne, 88 Station	<i>Philip Wilding</i>
158	Quiet Period	<i>Enid Abrahams</i>
159	The Chess Players	<i>Richard Southern</i>
160	Damping Down	<i>Stanley Jezzard</i>
161	War Comes to the Art School	<i>Norman Hepple</i>
162	Smoke and Flame	<i>Elizabeth Bridge</i>
163	Men of the River Service	<i>Stanley Dodd</i>
164	Came the Dawn	<i>Stanley Flegg</i>

HUMOUROUS DRAWINGS (Nos. 165-201).

165	No, no, Miss Pettigrew, you haven't got quite the Idea	<i>R. S. E. Coram ("Maroc")</i>
166	Danger—Men Working Overhead	<i>R. S. E. Coram ("Maroc")</i>
167	Model Hobbies	<i>Ben Betts</i>
168	Occurrence Book	<i>Ben Betts</i>
169	The Petrol Lorry	<i>D. Tutt</i>
170	Collecting Gear	<i>Ben Betts</i>
171	This is no Time for Relaxation, Smithers	<i>R. S. E. Coram ("Maroc")</i>

- 172 Blimey, Hitler started this ———
R. S. E. Coram ("Maroc")
- 173 Convoy
R. E. Privett
- 174 I wish they'd ration this sort of
 Hose
R. S. E. Coram ("Maroc")
- 175 Is this the Hole a Bomb made
Ben Betts
- 176 Nice Warm Fire
Ben Betts
- 177 Stand from Under
Ben Betts
- 178 Humourous Drawings
Ben Betts
- 179 Blitz and Pieces
R. S. E. Coram ("Maroc")
- 180 Blitz and Pieces
R. S. E. Coram ("Maroc")
- 181 Girls in Uniform
Julia H. Lowenthal
- 182 A Watched Kettle Never Boils
H. J. Churcher ("Lurcher")
- 183 Humourous Drawings
Ben Betts
- 184 Humourous Drawing
Ben Betts
- 185 Mr. G. J. Adams, London Fire Force
R. S. E. Coram ("Maroc")
- 186 82 V Station
H. J. Churcher ("Lurcher")
- 187 Blitz and Pieces
R. S. E. Coram ("Maroc")
- 188 What I want to Know is : Who the
 Blazes made it a 500 Pump Call ?
Ben Betts
- 189 The Dawn Patrol
R. E. Privett
- 190 It takes a bit longer, but look at the
 Petrol we Save
R. S. E. Coram ("Maroc")
- 191 " Dr. Livingstone, I presume "
Ben Betts
- 192 Get to Work
Ben Betts
- 194 Lift Not Working
Stanley Brettell
- 195 Training
Stanley Brettell
- 196 Humourous Drawing
Ben Betts
- 197 Hurry, Miss, don't be too particular
R. S. E. Coram ("Maroc")
- 198 Business as Usual
Ben Betts
- 199 Did you ever play Snakes and
 Ladders ?
R. S. E. Coram ("Maroc")
- 200 Hose-laying Lorry
Ben Betts
- 201 Familiarity breeds ———
R. S. E. Coram ("Maroc")

FIRE WATCHING POST
W. S. HainesTODAY'S PORTRAIT
F. T. W. Cook

SMALL SOUTH ROOM.

WATER COLOURS AND OILS (Nos. 202-233).

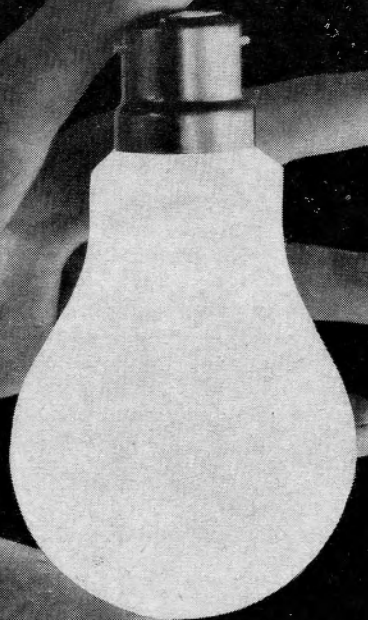
202	Timber Wharf at Limehouse, September, 1940	<i>T. J. Gaskell</i>
203	River's Edge	<i>Philip Le Brun</i>
204	East End	<i>F. T. W. Cook</i>
205	Maples—from 5-H-10 Headquarters April, 1941	<i>Cyril F. Jones</i>
206	Competition Drill	<i>S. F. Whitelocke</i>
207	Fireboat "Massey Shaw" in Dun- kirk Harbour, June, 1940	<i>Rudolph Haybrook</i>
208	Brothers in Action	<i>Rudolph Haybrook</i>
209	Lull Period—20 Z's Garden	<i>Reginald Mills</i>
210	The Tower—Seen in the glare of a nearby Fire	<i>Brian Gilks</i>
211	Design	<i>F. J. Needhan</i>
212	Mr. C. J. Wright (King's Medal), London Fire Force Headquarters	<i>H. Manwaring</i>
213	At the Wheel	<i>J. Wallace Orr</i>
214	Convoy en route to the Docks	<i>Cyril F. Jones</i>
215	S.O.S.	<i>Leslie Carr</i>
216	Musical Moments	<i>Julia H. Lowenthal</i>
217	Service	<i>Rudolph Haybrook</i>
218	Driving by Moonlight	<i>Mary Pitcairn</i>
219	Incendiaries on an East End Fire.	<i>Francis Nichols</i>
220	St. Paul's	<i>F. T. W. Cook</i>
221	Bomb Blast	<i>F. T. W. Cook</i>
222	Silhouettes in Queen Victoria Street	<i>Norman Hepple</i>
223	Leading Fireman Cooper, O.B.E., 50 U Station	<i>Bernard Hailstone</i>
224	Damping Down off Southampton Row, April, 1941	<i>Bernard Hailstone</i>
225	The Night Alarm	<i>Francis Nichols</i>
226	Waiting for Water	<i>A. E. Turpin</i>
227	London Fire Force Officer	<i>J. Kingsley Sutton</i>
228	Section Officer Mrs. K. Sayer, London Fire Force	<i>Reginald Mills</i>
229	Dean's Yard, Westminster, May, 1941	<i>F. J. Needhan</i>
230	Street Corner	<i>Fredk. J. Smith</i>
231	The Man on the Branch	<i>J. Kingsley Sutton</i>
232	Roughly Speaking—Me	<i>George Lane</i>
233	Self Portrait	<i>Stanley Brettell</i>

SCULPTURE and MINIATURE (Nos. 234-246).

234	Fireman J. W. Turner—London Fire Force	<i>F. E. France</i>
235	The Unbroken Spirit	<i>E. D. Rulton</i>
236	The Volunteer	<i>E. D. Rulton</i>
237	Fireman G. Petty—London Fire Force	<i>F. E. France</i>
238	Mr. E. J. Kill—Second Officer, Harrow Fire Brigade	<i>E. Shone-Jones</i>
239	Getting to Work	<i>J. H. Zorn</i>
240	First Duty	<i>E. Thompson</i>
241	A London Fireman	<i>J. H. Zorn</i>
242	Mr. H. H. Anderson—Chief Officer, Harrow Fire Brigade	<i>E. Shone-Jones</i>
243	Action	<i>F. E. France</i>
244	Fireman Alec Gower— 80 Y Station	<i>J. H. Zorn</i>
245	A London Fireman in Action	<i>E. Shone-Jones</i>
246	Daddy's Little Girl	<i>Mary Pitcairn</i>



Osram



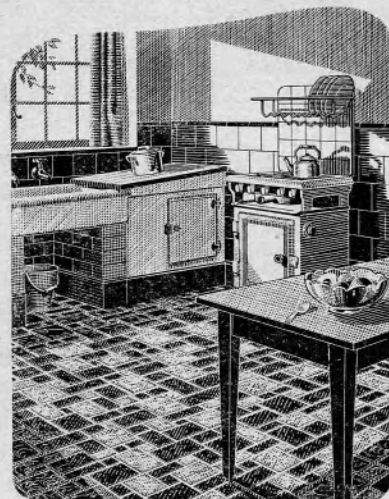
THE WONDERFUL LAMP

A **S.E.C.** PRODUCT

MADE IN ENGLAND

LIST OF EXHIBITORS

WID ABRAHAMS
J. ANDREWS
LESLIE BAKER
M. J. R. BANKES
BEN BETTS
STANLEY BRETTELL
ELIZABETH BRIDGE
BESSIE BYRNE
LESLIE CARR
H. J. CHURCHER
F. T. W. COOK
R. S. E. CORAM
J. E. DANIELS
PAUL DESSAU
RONALD DICKENS
STANLEY DODD
W. EWER
STANLEY FLEGG
F. E. FRANCE
STANLEY FROUDE
T. J. GASKELL
BRIAN GILKS
BERNARD HALLSTONE
W. S. HAINES
RUDOLPH HAYBROOK
NORMAN HEPPLE
R. T. HORLEY
STANLEY JEZZARD
CYRIL F. JONES
J. KINGSLEY SUTTON
GEORGE LANE
PHILIP LE BRUN
JULIA H. LOWENTHAL
H. MANWARING
REGINALD MILLS
JOHN BRYCE MUNGALL
F. J. NEDDHAN
O. NEWBOLD
FRANCIS NICHOLS
PHILIP NORTH-TAYLOR
MARY PITCAIRN
PRUNELLA C. POTT
R. E. PRIVETT
CHARLES H. REE
A. W. RIDGE
LEONARD ROSOMAN
E. D. RULTON
E. SHONE-JONES
FREDK. J. SMITH
RICHARD SOUTHERN
A. E. SPEER
E. THOMPSON
E. G. TURNER
A. E. TURPIN
D. TUTT
A. C. TYLÉE
E. BOYE UDEN
DONALD W. VANDY
J. WALLACE ORR
S. F. WHITELOCKE
PHILIP WILDING
W. MATVYN WRIGHT
J. H. ZORN



Of course . . .

everybody knows Catesbys for Lino. For 78 years this famous London firm has specialised in Lino floor coverings. That is why Municipal Authorities, architects, and well-known building contractors come to Catesbys with their floor covering problems. That is why Mrs. Suburbia comes to Catesbys for her kitchen lino. Apart from a wealth of specialised experience, Catesbys offer the widest range of qualities and the biggest choice of designs and colours. Here are floor coverings for every conceivable type of room, and you are sure of the best possible value for your money at Catesbys.

CATESBYS CORK LINO

Tottenham Court Road, London, W. 1

A BRIEF ACCOUNT OF THE WORK
OF THE
London Fire Service Benevolent Fund

BY
THE CHAIRMAN OF THE COMMITTEE.

The personal distress that war brings to so many inevitably falls heavily on men and women who hold the important duty of preventing destruction by fire of the capital city of the Empire.

As soon as the aerial bombardment of London commenced it became clear that fire-fighters would be continually facing dangers as severe as in front line fighting. Indeed, casualties, killed or wounded, reached nearly four-figure dimensions within the first six weeks of continuous nightly bombing. At the same time the homes and personal belongings of many in the Fire Service were suffering destruction or damage.

It was thus natural that a Benevolent Fund should develop, and the members of the regular Brigade and the Men's and Women's Auxiliary Services contributed sufficient to inaugurate the London Fire Service Benevolent Fund.

The objects of the Fund are to provide, in addition to, or pending the receipt of, what is due from official sources :

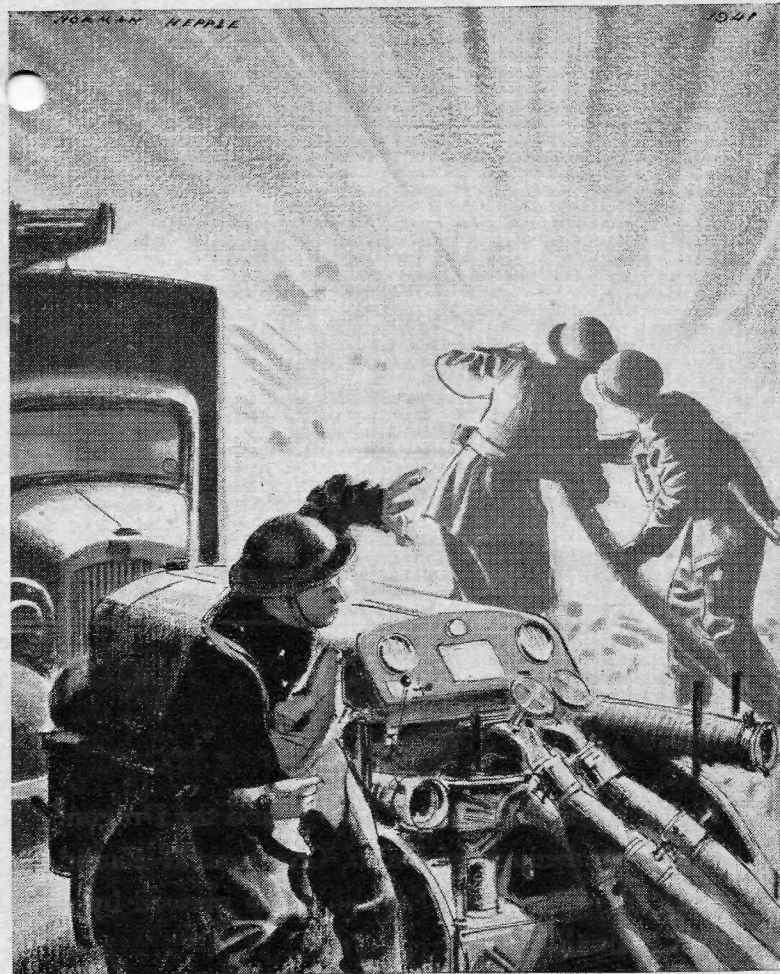
- (a) immediate assistance to dependants of those killed as well as help to the injured and sick personnel of the London Fire Service.
- (b) Immediate relief in cases of distress where possessions are destroyed by enemy action.
- (c) Support for any proposals for the provision of benefits or comforts to the personnel of the Service or their dependants.

There are, of course, official schemes for compensation both for personal and material losses, but the sudden loss of the "breadwinner" or of his ability to earn his livelihood leaves a great deal of immediate hardship which no Government scheme could adequately cover.

In addition the Fund has recently made arrangements to assist in the maintenance of all children under 14 years of age whose fathers have lost their lives in the execution of their duties.

Contributions from the Public are earnestly solicited. Cheques should be made payable to the London Fire Service Benevolent Fund, and all communications should be addressed to the Hon. Secretary, London Fire Service Benevolent Fund, London Fire Brigade Headquarters, Albert Embankment, S.E.1.

K. N. HOARE, LT.-COMMANDER, R.N. (RETD.).
London Fire Force.



'IN THE THICK OF IT':

Drawn for Coventry Climax Engines Ltd., makers of Godiva trailer fire-fighters, by Norman Hepple.





Today, perhaps more than ever before, there is much to be gained from the companionship of good music.

*The World's Highest Achievements in
Sound Reproduction are to be found in*

"His Master's Voice"



THE GRAMOPHONE COMPANY LIMITED · HAYES · MIDDLESEX



Today the symbol of St. George and the Dragon, as the trademark of Mann, Crossman & Paulin Ltd., identifies good English beers brewed by a firm with 150 years' reputation.

MANN'S BEERS

MANN, CROSSMAN AND PAULIN LTD.
ALBION BREWERY MILE END E.

Daily Telegraph

WORLD MAP

THIS map has been drawn to the special requirements of the *Daily Telegraph*, and is an outstanding example of the cartographer's art. Its unusual presentation—the north-to-south division is through the Atlantic, not the Pacific Ocean—makes it of more than usual interest at the present time. In full colour, and extremely well keyed, it possesses both an artistic and educational value, providing a permanent source of reference for to-day and after the war.

SIZE
30" x 40"

PRICE
1/- NET

IN FULL
COLOUR

Obtainable from Booksellers and Newsagents, 1/-; or 1/3 post paid from "Daily Telegraph," Fleet St., London, E.C.4.