



Showroom (2 floors) and Town Centre Offices, High Street and Bank Street, Hythe.

DEPARTMENTS

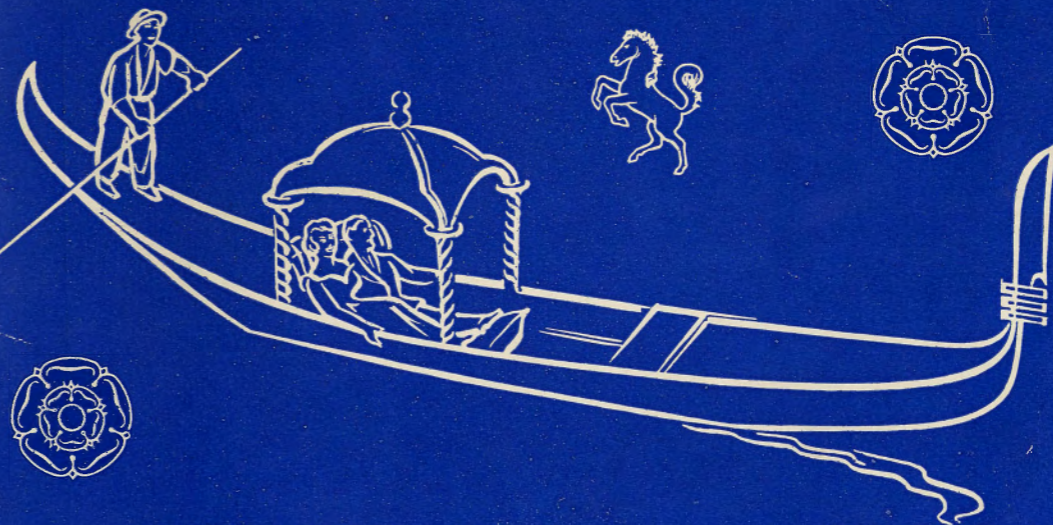
Coaches and Omnibuses : Hire Cars : Excursions and Tours
Household Removals : Warehousing : Shipment Overseas
: Furniture and Furnishings : General House Fitting :

Main Offices :
 ALBERT ROAD
 HYTHE
 Phone 67454



Ashford :
 SARACEN'S GARAGE
 1, NORTH ST.
 Phone 63

Hythe Venetian Fête



**WEDNESDAY
 12th AUGUST**

1953

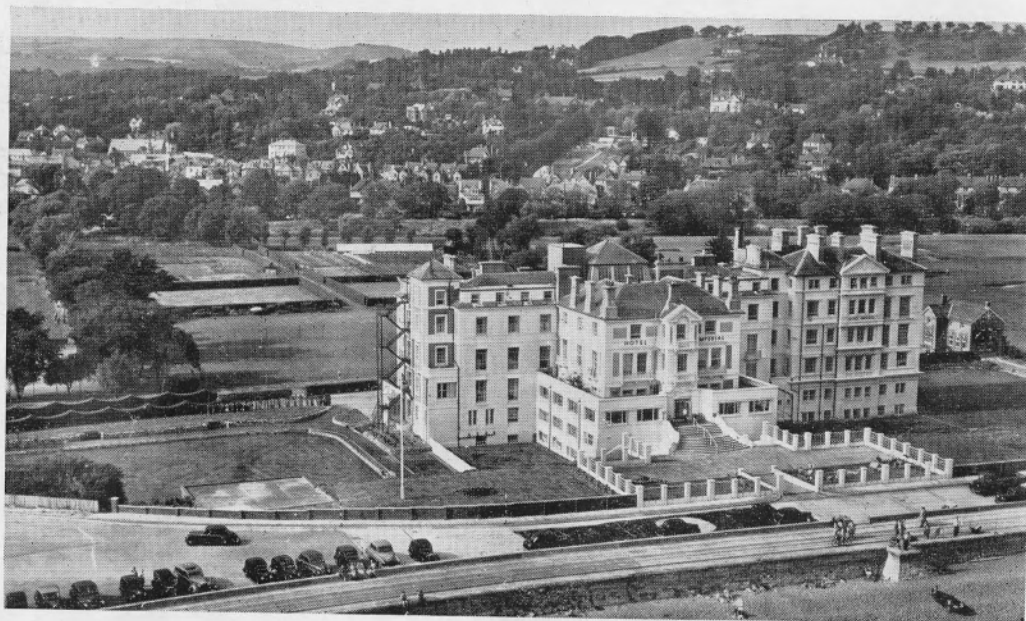
**ON THE ROYAL
 MILITARY CANAL**

PROGRAMME

6^D

HYTHE (KENT)

HOTEL IMPERIAL



FULLY LICENSED

A.A.**R.A.C.**

This Hotel, standing in 50 acres of beautiful grounds,
has Central Heating and Telephone in every room.

Private Suites, Lift, Ballroom, Hard and Grass Tennis Courts,
Croquet and own full-length nine hole golf course in Hotel Grounds.

OPEN ALL THE YEAR ROUND

Apply for Terms: C. Greame Horspool, Manager.

Telephone : Hythe 67441

TRAVEL TO SANDLING JUNCTION (Station Bus meets all trains) or FOLKESTONE CENTRAL

Welcome to the Fete . .

Mayor's Parlour,

Town Hall, Hythe.

It is my privilege in this Coronation Year again to extend a welcome to our visitors, and to thank all those who have worked so hard to make the 1953 Venetian Fete a success.

We in Hythe realise our good fortune in having a waterway suitable for staging an event of this nature, and I can assure you that we intend to do everything in our power to maintain the high standard of previous Fetes, and to better them, if possible. We like to feel that our Venetian Fete is something just a little bit different, and which is peculiarly suitable to Hythe. Judging by the support we have received in the past, and continue to receive year by year, you, the general public, are in full agreement.

It is not easy to produce an event of this nature — indeed it could not be done at all without public-spirited people willing to give up hours of their time for the benefit of the Society, which, of course, means for the benefit of charity. Fortunately, Hythe is blessed with many such people.

LILIAN E. FARMER,

Mayor.



AN ACKNOWLEDGMENT by Commander N. C. M. Findlay R.N. (Retired) the Chairman of the Committee which launched an appeal early this year when a sum of £1,500 was guaranteed.

I do not think that it has always been appreciated how much work and financial risk has been undertaken by those who have for many years organised and managed the HYTHE VENETIAN FETE.

The Fete has now reached proportions which make it impossible for these risks to be taken by individuals elected to the Committee and an appeal was therefore launched this year for Guarantors to come forward.

This they have done most generously, and it is entirely due to them and to the lead they have given that our Fete is being presented in this Coronation Year, and that it is being so keenly supported by the townspeople of Hythe.

As Chairman of the Committee who launched the appeal, I welcome this opportunity to thank most sincerely those who have responded so splendidly.

N. C. M. Findlay
Chairman, ✓

Hythe Venetian Fete Appeal Committee.

Cole Bros.

MEN'S AND BOYS'
COMPLETE OUTFITTERS
FOR ALL OCCASIONS

For MEN and LADIES — our TAILORING DEPT. is always at your service. Moderate prices — Quick delivery

Also Customers' Own Material made up to individual requirements

32/34 and 112a, HIGH STREET, HYTHE

Tel. : 67394

McILROY'S
of KENT LTD

SANDGATE ROAD and
ALEXANDRA GARDENS

FOLKESTONE

THE POPULAR WALK-THROUGH STORE
WHERE YOU GET KEEN VALUE

Holidays provide an opportunity for husbands and wives to shop together. Select the Carpet or Curtains you need and let us pack a dispatch to reach you on your return home—a suggested service gladly offered.

Special
Holiday Bargains
during August

BEACH TOWELS

- good thick, absorbent quality which really dries.
- good size to 22 x 44 inches.
- gay dice stripes in various colours.
- will give good home service after the holiday.

We believe these to be unbeatable value at **3/11½**

THE PRESIDENT, OFFICERS AND COMMITTEE OF THE HYTHE VENETIAN FETE CHARITY SOCIETY

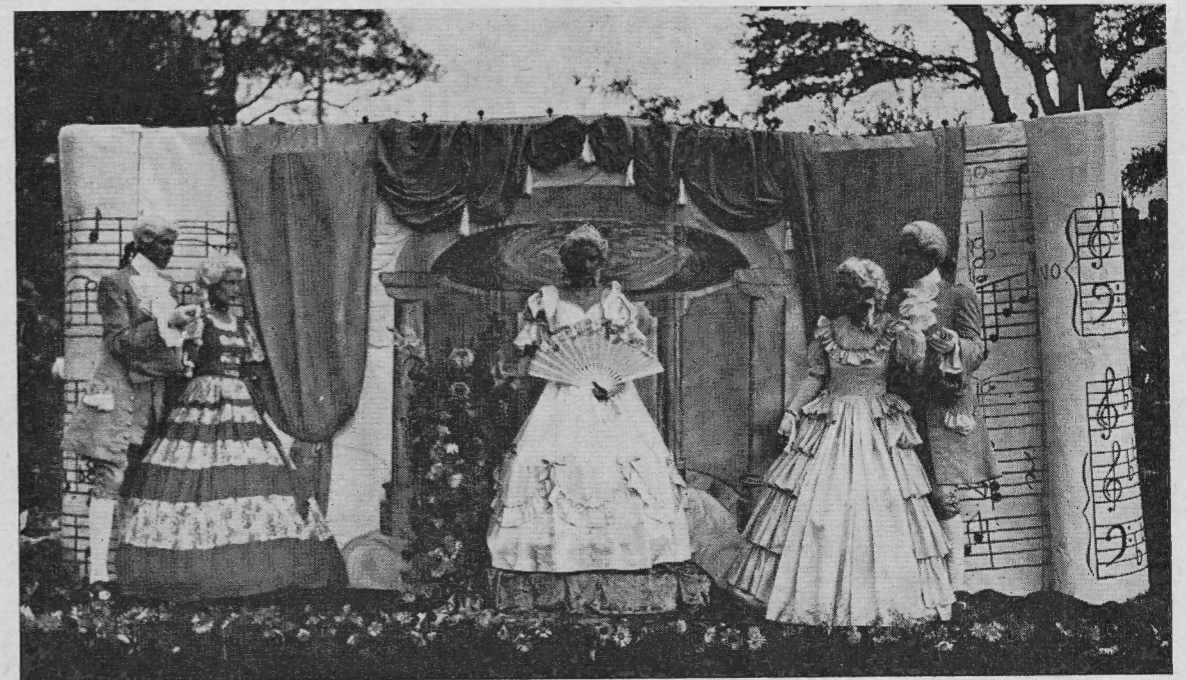
President : THE RIGHT WORSHIPFUL THE MAYOR OF HYTHE (Ald. Mrs. L. E. FARMER, J.P.)
Chairman : Rev. E. A. Newman, M.A. *Vice-Chairman and Chairman of Works Committee :* S. R. T. Sharp.
Joint Hon. Treasurers and Box Office : R. L. Alexander and A. P. Pellatt. *Secretary :* Major R. G. Liddiard.
Assistant Secretary : G. Doherty. *Fete Organiser :* H. Rysart. *Hon. Auditors :* Messrs. K. Readhead & Co.
Liaison-Hythe Cricket Week Committee : G. P. Walter. *Chairman-Hospitality Committee :* Coun. Mrs. G. I. Chapple.
Chairman-Publicity Committee : J. C. Newman. *Chairman-Competitors and Boats Committee :* W. E. Pine.
Chairman-Personnel Committee : R.W. Godden. *Duties connected with Fete Queen & Decorated Barge :* Miss M. F. Funnell.
Committee : Mrs. D. Aplin, Mrs. W. E. Pine, Miss M. Ramsay, Mrs. H. Rysart, Miss E. M. Wild, Lieut. J. Whyte, W.R.A.C., Comm. N. C. M. Findlay, R.N. (Retd.), Major F. Raine, R.E., Alderman H. Fisher, Councillor L. Andrews, Messrs. L. Clemow, H. Cromack, Hugh Farmer, F. E. Fright, G. Munn (Jnr.), A. Norris, H. Shaw and A. Urquhart.

In welcoming you to the 1953 Venetian Fete, the President, Chairman and Committee wish to say "Thank you" for supporting what has become the outstanding annual event of the Cinque Port of Hythe.

The Committee have worked assiduously and happily and have had the full co-operation of the Mayor and Corporation of Hythe. But so many other people have done so much to make the Fete a success that it is impossible for the Committee to afford adequate praise. They desire everyone who has been concerned, either directly and indirectly, to know how much their friendly advice and help has been appreciated. A special word of praise is due to all entrants who for many weeks have been engaged in designing, building and presenting their lovely tableaux for our enjoyment. Please remember, if there were no tableaux there would be no Fete.

An innovation has been made by incorporating in this programme a ballot-sheet so that you can allot marks to the respective tableaux to enable you to see how far your own choice accords with the judgment of the official Judging Panel. It is hoped this will give added enjoyment.

All profits of the Venetian Fete are handed to charity. This year they will be divided equally between the Borough of Hythe's Old People's Welfare Committee and the Hythe Institute, a large building used for social and other purposes by local associations and bodies. By virtue of money received from previous Fetes, a most excellent Club Room for Hythe's elderly people is now in existence and being extensively used in a part of the Institute.



A Tableau of grace and charm

A Welcome

The Hythe Chamber of Commerce extends to all visitors to the Venetian Fete a hearty welcome, and hope an enjoyable evening will be spent in our ancient Cinque Port.

An Invitation

To all those from neighbouring Towns

to visit the Town of Hythe and see what the shops in this ancient Cinque Port can offer you.

To those from farther afield

to stay in Hythe "a gem of a place, so near London" — which is an ideally attractive spot for a holiday affording a perfect combination of lovely Kentish countryside and the fresh invigoration of the sparkling sea.

Hythe is particularly noted for its freedom from fog. By its natural beauty it is sheltered from the East winds and is therefore warm in winter. It can be recommended as a Winter as well as a Summer resort.

A magnificent promenade gives direct access between Hythe and Folkestone along the seafront.

Boating and Fishing on sea and beautiful Waterway.

Country Walks within a few minutes of the Sea.

Tennis — both grass and hard courts available.

Cricket and Recreational grounds and gardens.

Bowling Green — one of the prettiest and best in Kent.

World's Smallest Public Railway to Dungeness Lighthouse via Dymchurch and New Romney
13¼ miles of 15 inch gauge.

Theatres and Cinemas within the Town and adjacent.

Excellent Hotels and Boarding Establishments.

Illustrated Guide and all information (send 6d. P.O.) from :-

The Publicity Officer, Hythe, Kent.

Telephone No. 67893

ROYAL MILITARY CANAL

The Royal Military Canal, upon a stretch of which the Venetian Fete is held every year, was constructed about 1805 as a defensive measure against the threatened invasion by Napoleon Bonaparte.

In its original form, with strong points, it would have presented a formidable barrier to the invading troops of Boney's army.

The Canal is 23 miles long, stretching from Seabrook to near Rye. Its average breadth is about 30 yards, and originally it was six feet deep throughout.

Breast-works were thrown up throughout its entire length.

The design of the Canal is such that it could be commanded by batteries placed at strategic positions. There were embrasures at various points along the earthworks.

The construction of the Canal was finally completed in 1812, under the direction of the Royal Staff Corps, but it is believed that a good deal of it was constructed by civilian labour.

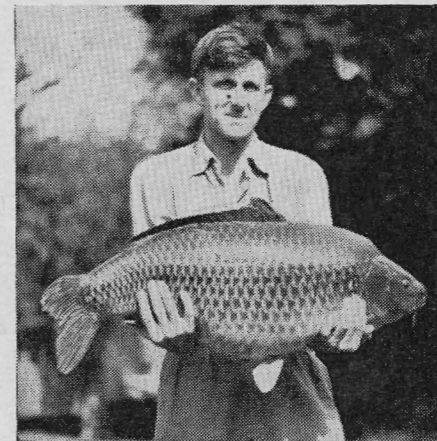
Twiss Road, at the eastern end of the Canal, takes its name from General Twiss who was to have commanded a battery of twelve 24-pounders in that area. The guns were never completely mounted, however, since the war with France ended before the Twiss Fort had been fully constructed.

The Canal is no longer the waterway it once was. In years gone by a regular service of hoys traded up and down its entire length, carrying goods from and to Hythe.

An old Hythe Guide of the year 1816 states :—"The Canal was stocked with fish in 1806, and having been carefully guarded and never fished, abounds with large carp, tench, perch, pike, eels and other fresh-water fish. Licences for angling are expected shortly to be granted, as the fishing of these waters is advertised to be let by lease."

Nowadays, of course, many anglers come to Hythe to enjoy their sport. The Cinque Ports Angling Society now has the fishing rights.

A RECORD !



This British record 44 lb. carp was caught in 1952 by Mr. Richard Walker of Hitchin on a rod made from our materials.

CAN WE HELP YOU CATCH A BIG 'UN ?

J. B. WALKER 5, Marine Walk Street
HYTHE. Phone 66228

FINE FISHING TACKLE

HYTHE'S MUSIC SHOP



FOR RECORDS, RADIO, RADIO-
GRAMS, TELEVISION AND ALL
ELECTRICAL GOODS

REPAIRS AND INSTALLATIONS

AGENTS FOR LEADING MANU-
FACTURERS, INCLUDING H.M.V.,
BUSH, PYE, G.E.C., HOOVER,
ETC., ETC.



H. J. HORSLEY, LTD.
57, HIGH STREET
Phone 66576



Coronation Year Revival of **HYTHE CRICKET WEEK** August 10th – August 15th

A Week of Pageantry – Military Displays – Athletics – Cricket – And all the Fun of the Fair

MONDAY, AUG. 10th. CIVIC DAY
11.00 a.m. HYTHE v. TAUNTON C.C.
Admission 6d.

3.0 p.m. FLOWER SHOW.
7.30 p.m. CEREMONIAL ARRIVAL OF MAYOR AND CORPORATION.
TABLEAU, Women of the British Commonwealth of Nations.
MARCH PAST of SOCIETIES, portraying Cultural and Community Life of Hythe.
SHAKESPEAREAN-ELIZABETHAN PAGEANT
DANCING on the Green.
Admission 1/6, Children 9d.

TUESDAY, AUG. 11th
11.00 a.m. HYTHE v. BAND OF BROTHERS
Admission 6d.
7.30 p.m. SPORTS MEETING (organised by Hythe A.C.). Visiting teams from Dover A.C., Royal Marines, Deal, W.R.A.F., Hawkinge.
Admission 1/-, Children 6d.

Seats in Reserved Enclosure, 2/6, from the "Herald" Office, 84, High Street, Hythe. Tel. 66667.
Further particulars from Hon. Sec., W. J. Bailey, 86, High Street, Hythe. Tel. 66608.

THURSDAY, AUG. 13th
11.0 a.m. HYTHE v. WINE TRADERS C.C.
Admission 6d.
7.0 p.m. All the Fun of the Fair!

FRIDAY, AUG. 14th
11.0 a.m. HYTHE v. GOOGLIES C.C.
Admission 6d.
7.0 p.m. All the Fun of the Fair!

SATURDAY, AUG. 15th. MILITARY DAY
11.0 a.m. HYTHE v. 1st BN. GLOUCESTER-SHIRE REGT.
Admission 6d.
7.30 p.m. MILITARY DISPLAY and Ceremonial Beating of Retreat.
Band of 1st Bn. The Buffs; Pipes and Drums Royal Inniskillings; Band and Drums 1st Gloucestershire Regt.; Trick Riding Display 23rd Corps of Signals (T.A.); P.T. Display by Army School of P.T. (by kind permission of Officers Commanding).
Admission 2/-, Children 1/-



HYTHE VENETIAN FETE, 1953

PROGRAMME AND TIMETABLE

(Subject to Alteration)

- 3.30 p.m. Gates open.
- 4.0 p.m. Musical Selections by Hythe Town Military Band, (Conductor) : Major H. J. Pettitt. Ian Clark's Accordion Band. Eric Wood and his Orchestra
- 5.0 p.m. Folkestone Rowing Club, "H.M.S. Revenge" Challenge Cup Race.
- 6.0 p.m. Community Singing, Conductor : Mr. H. Millsted, F.R.C.O. (Chm.), L.R.A.M.
- 6.30 p.m. Visiting Mayors embark and proceed to Central Stage followed by the Carnival Queen and Retinue.
- 6.45 p.m. Mayor of Hythe and Chairman of Venetian Fete receive their guests at Central Stage. FETE DECLARED OPEN.
- 7 – 10 p.m. (approx). Parade of Boats.
1st Parade: Incidents from Stage or Screen.
2nd Parade: Humorous Tableaux.

- 3rd Parade: Open. (Businesses and Firms)
- 4th Parade: Open. (Societies, Clubs and Associations).
- 5th Parade: Open. (Private persons).
- 6th Parade: Open. (Children under the age of 16). Their own unassisted work.

Musical Interlude by Hythe Town Military Band, Ian Clark's Accordion Band and Eric Wood & his Orchestra

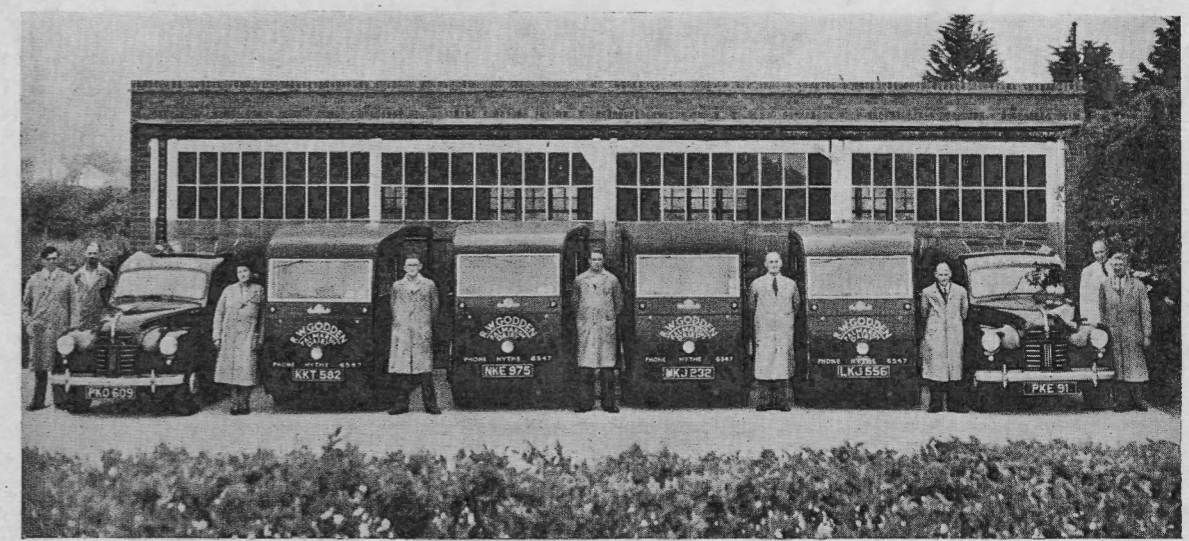
Parade of Illuminated Boats and Presentation of Prizes. Please see pages 8 & 9 for List of Entrants.

Searchlights by kind permission of the Commandant, A.A. Command School of Technical Instruction R.E.M.E., Lydd (Lt.-Col. N. W. Schenke, R.E.M.E.)

Floral decorations by Duruz & Sons, Hythe, and Twiss Road Nurseries, Hythe.

The entire performance is being covered by the B.B.C. for radio and television programmes.

Photographs used in this Programme by courtesy of Fullers Photo News Service.



ALL AT YOUR SERVICE!

R. W. GODDEN

for Channel Island Tuberculin Tested and Pasteurised Milk

Phone 66547 ——— OUR AIM IS TO PLEASE! ——— Phone 66547

JUDGES

MR. G. M. NORDEN, A.R.C.A., F.R.S.A.
(Principal of Dover and Folkestone Schools of Art).
 ALDERMAN MRS. MARY IRELAND,
(Authority and Lecturer on Historic Costumes).
 MISS ANN HAYWOOD, A.R.C.A.
 BRIGADIER G. P. THOMAS,
*(Secretary of the Folkestone and Hythe Operatic
 and Dramatic Society, Drama Secretary for the
 Kent Council of Social Service).*
 MR. PETER LUCAS,
(School of Art teacher).

HYTHE VENETIAN FETE

1953

to be opened by

ADMIRAL SIR GEOFFREY OLIVER, K.C.B., D.S.O., C. IN C. THE NORE
*In the presence of The Right Worshipful the Mayor of Hythe ; the
 Mayors of the Cinque Ports and their Limbs and representatives of other
 towns.*

The Corporation of Hythe Challenge Trophy will be awarded to the best exhibit on parade.

The "Herald" Challenge Cup (presented by Messrs. F. J. Parsons (Kent Newspapers) Ltd., and 15 guineas, will be awarded to the best illuminated boat on parade.

You are invited to allot marks to the respective tableaux, to see how your own choice accords with the judgment of the official panel.

LIST OF ENTRANTS AS AT TIME OF GOING TO PRESS *(Subject to alteration or amendment).*

FIRST PARADE.

CLASS 1. ENTRIES PORTRAYING INCIDENTS FROM THE STAGE OR SCREEN.

1st Prize : Silver rose bowl (presented by the Corporation of Hythe) and 20 guineas. 2nd Prize : 15 gns.
 3rd Prize : 10 gns. Highly commended (if merited) : 7 gns. Unplaced entries : 5 gns.

Entries will be judged on : (A) Perfection of portrayal, 25 marks ; (B) Artistic design, 25 marks ; (C) Workmanship and finish, 20 marks ; (D) Authenticity of costumes, 15 marks ; (E) Handling and Stability, 15 marks. Total, 100 marks.

Boat No.	Entrant	(a)	(b)	(c)	(d)	(e)	Total
1	Messrs. C. J. Nickolls Social and Sports Club						
2	The Misses V. Sitch, M. Gower, M. Spicer, P. Tiltman ..						
3	Folkestone Co-operative Society						
4	S. J. Sharp & Son (HYTHE), Ltd.						
5							

SECOND PARADE

CLASS 2. HUMOROUS SECTION. Open to all without restriction.

1st Prize : Silver cup (presented by East Kent Road Car Co.) and 20 guineas. 2nd Prize : 15 gns. 3rd Prize : 10 gns. Highly commended (if merited) : 7 gns. Unplaced entries : 5 gns.

Entries will be judged on :—(A) Humour, 40 marks ; (B) Originality, 30 marks ; (C) Workmanship and Finish, 15 marks ; (D) Handling and Stability, 15 marks. Total 100 marks.

Boat No.	Entrant	(a)	(b)	(c)	(d)	Total
6	Romney Marsh Det., 507 Coy. R.A.S.C. (T.A.)					
7	Bobby & Co., Ltd., Folkestone					
8						
9						

THIRD PARADE.

CLASS 3. OPEN SECTION. Restricted to entries from Businesses and Firms.

1st Prize : Silver Cup (presented by Councillor Mrs. G. Chapple) and 20 gns. 2nd Prize : 15 gns. 3rd Prize : 10 gns. Highly commended (if merited) : 7 gns. Unplaced entries : 5 gns.

Entries in classes 3 to 6 will be judged on :—(A) Originality, 25 marks ; (B) Artistic design, 25 marks ; (C) Workmanship and finish, 20 marks ; (D) Authenticity of costumes, 15 marks ; (E) Handling and Stability, 15 marks. Total 100 marks.

Boat No.	Entrant	(a)	(b)	(c)	(d)	(e)	Total
10	Newman & Sons (HYTHE) Ltd.						
11	Mackeson & Company, Ltd.						
12	Small Arms Wing, School of Infantry, Hythe						
13	C. J. Nickolls, Ltd., Folkestone						
14							
15							
16							

FOURTH PARADE.

CLASS 4. OPEN SECTION. Restricted to entries from Societies, Clubs, Associations and other voluntary bodies.

1st Prize : Silver cup (presented by the Hythe Venetian Fete Charity Society) and 20 gns. 2nd Prize : 15 gns. 3rd Prize : 10 gns. Highly commended (if merited) : 7 gns. Unplaced entries : 5 gns.

Boat No.	Entrant	(a)	(b)	(c)	(d)	(e)	Total
17	Kent Fire Brigade (HYTHE)						
18	Folkestone St. John Ambulance Nursing Cadets						
19	Folkestone Post Office Social and Sports Club						
20	Hythe Townswomen's Guild						
21	St. John Ambulance Cadets (HYTHE)						
22	Hythe M.B. National Savings Committee						
23	Messrs. Marks & Spencers Sports and Social Club						
24	Royal Air Force Association (HYTHE) Branch						
25	1st Hythe Brownie Pack						
26							
27							

FIFTH PARADE.

CLASS 5. OPEN SECTION. Restricted to entries from private persons.

1st Prize : Silver Cup (presented by Mrs. R. A. C. Wellesley) and 20 gns. 2nd Prize : 15 gns. 3rd Prize : 10 gns. Highly commended (if merited) : 7 gns. Unplaced entries : 5 gns.

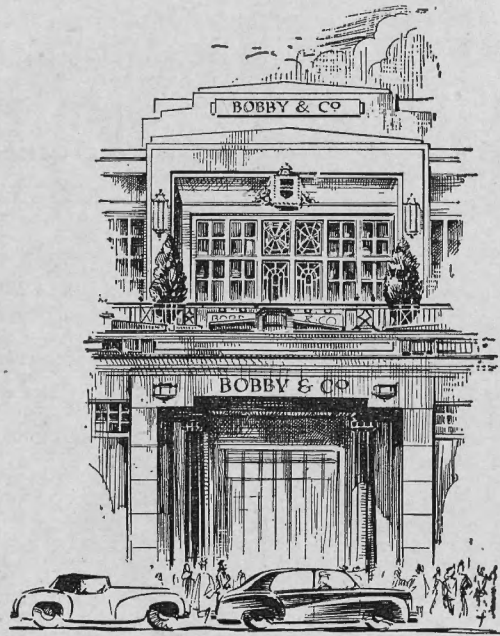
Boat No.	Entrant	(a)	(b)	(c)	(d)	(e)	Total
28	Folkestone Food Office Staff						
29	James Norrington, Sellindge						
30	Mrs. R. A. Michell, Hythe						
31	Capt. and Mrs. Persse and Pat Persse						
32	Mrs. E. A. Sanders, Hythe						
33	Hythe Vicarage and Friends						
34							
35							

SIXTH PARADE.

CLASS 6. OPEN SECTION. Restricted to entries by children under the age of 16. Their own unassisted work.

1st Prize : 3 gns. 2nd Prize : 2 gns. 3rd Prize : 1 gn.

Boat No.	Entrant	(a)	(b)	(c)	(d)	(e)	Total
36	Robert and David Nicoll, Hythe						
37	George and Roy Coles and Ken Tassell						
38							
39							
40							



There is no Shop quite like . . .
BOBBYS of FOLKESTONE

BOBBYS is more than a shop—it is a Store full of interest, activity and wonderful values . . . Everything that is fashionable to wear and useful for the home is here for you to view at your leisure. The wealth of selection, reliable quality and wide range of prices make even a long and tedious journey well worth while.

THE Restaurant at Bobbys of Folkestone has assumed a new elegance . . . It has been redesigned, reconstructed and beautifully refurnished and introduces a friendly atmosphere and charm which is entirely Bobbys own. Interlude for morning coffee makes a refreshing break during your shopping activities . . . Luncheon is cheerful and interesting . . . Tea-time restful and pleasant with delightful music by Leon Stiling and his Grand Piano and Clavioline . . . You'll like Bobbys New Restaurant . . . a place to be remembered for its good food and smooth efficient service.

- | | |
|--------------|---------------|
| FASHIONS | SHOES |
| FURNITURE | TOYS |
| FURS | LINENS |
| FABRICS | BEAUTY |
| HAIRDRESSING | TREATMENTS |
| MAN'S SHOP | TIMES LIBRARY |
| FURNISHINGS | RESTAURANT |

People who appreciate good things always shop at . . . BOBBYS

**BOBBY & CO. LTD., SANDGATE ROAD
 MAN'S SHOP, BOUVERIE PLACE**

Bobbys

Phone 3171
 (6 lines)



Sir Francis Drake sails again!



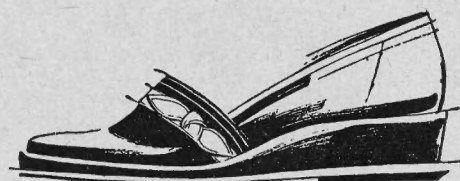
A picturesque illuminated Tableau.



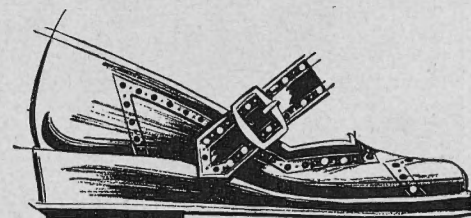
When smart women foregather, more elegantly, more charmingly dressed to grace a great occasion, Brevitt shoes proudly add their flattering lines to complement the perfect ensemble.

Obtainable at Messrs. Andrews, of Hythe and Ashford, who extend to you a welcome and a personal invitation to visit them during your stay.

Brevitt fashion's name for shoes that fit



CORONACH LOLLABOUT
Black Calf 59/9



MADCAP TWO
Tan Calf 59/9



SEMINOLE ROUNDABOUT
Red and Sienna Calf 69/9

76, HIGH STREET, HYTHE

Phone 67625

2, BANK STREET, ASHFORD

Phone 648

Also AIRBORNE — NORVIC — DIANA — KILTIE — Etc.

The Sound Equipment and Intercommunication Telephones used at this event were supplied by . . .

**BOXALL
of HYTHE**

'Phone 67378

as was the equipment used at many large County events.

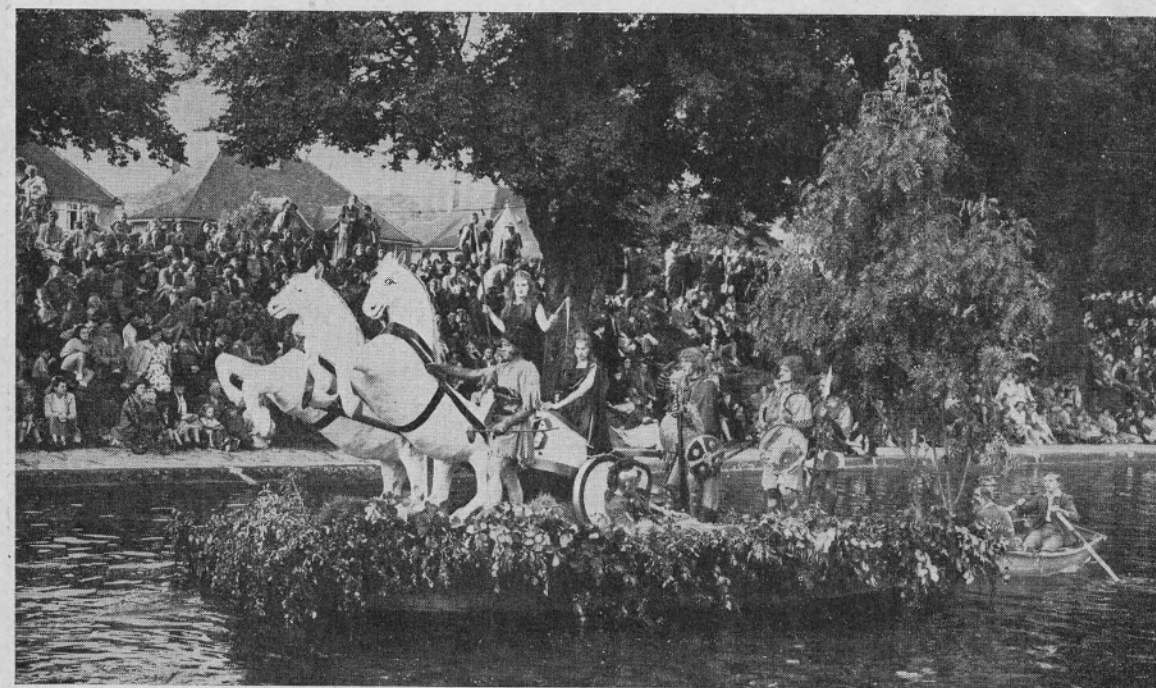
We hope it adds to your enjoyment

If you would like to choose your Clothes in a restful and charming atmosphere visit . . .

Anne Todd
FASHION SPECIALIST
83, HIGH STREET Hythe 67042

You will find the latest selection of LADIES' FASHIONS in FROCKS, SKIRTS, BLOUSES, WOOLLIES and MILLINERY

Personal attention given to all customers, particularly to the larger figure



A Lovely Entry in the 1951 Venetian Fete.

MACKESON'S

so strong—

so smooth

ON SALE THROUGHOUT THE COUNTRY

IT WILL ALWAYS BE . . . HYTHE

Wherever you may go, whatever you may see in this dear old County of ours you will find no town more distinctive in character, more restful yet charming, than Hythe. Here is the cradle of history in the ancient Cinque Port : here is, too, the modern town ; here are those narrow, old-world twisting streets that have survived from long ago to give an atmosphere of venerable age ; here are the spacious thoroughfares that the planners of the 20th century have created. The blend of age and modernity is well nigh perfect, for the one does not intrude upon the other. High above the town, a spiritual sentinel for eight hundred years, stands the Parish Church of St. Leonard. Externally it has nobility of appearance ; internally it is no less worthy. Note the fine lofty lines of the chancel, the spaciousness of a small cathedral ; note, too, among its treasures the fine old " Armada " chest with its complex locking devices. And, of course, every visitor to Hythe goes to the Crypt to see the thousands of skulls and human bones stored there. Nobody can tell you with certainty where they came from. Hythe, through the centuries, has been a guardian of England's shore, that is why you see the Martello towers along the seashore ; that is why the Royal Military Canal was constructed. All were built to keep out " Boney " a century and a half ago, and remain to us as picturesque reminders of what might have been. The port of Hythe, once flourishing, has long since disappeared, but the foreshore is there for the bathers and the holiday-makers and the anglers. Maybe a saunter along Ladies' Walk, that delightful pleasance in the heart of the town, calls you, perhaps a round of golf on the Hotel Imperial links or at nearby Littlestone, or maybe a pleasant hour or so watching a game of cricket on Hythe's cricket ground set so attractively amid the tall trees. And, of course, there is the smallest public railway in the world with its terminus at Hythe, bringing the villages and hamlets of spacious Romney Marsh and the great smooth stretches of Dymchurch sand, as well as the lonely expanses of Dungeness, within an hour's run. Hythe is a " different " holiday resort ; it has nothing blatant or noisy. It has the quality of peace and restfulness coupled with the enterprise and foresight of the modern age. It will never be a Margate or a Blackpool ; it will always be . . . Hythe.

1849 for fine Shoes . . . *for six reigns* 1953



LOTUS—" K " — CLARKS — JOYCE — PHYSICAL CULTURE — fitted by X-Ray

Walter Son

88, HIGH STREET, HYTHE, and at Folkestone—Dover—Tunbridge Wells—Ashford

THE PRIVATE GROCER
GIVES
PERSONAL SERVICE

SPICER'S STORES
(P. F. Spicer)

★

*Family Grocers and
Provision Merchants*

★

Phone: HYTHE 67360

★

27 STADE STREET · HYTHE

Phone 67751

Wm. E. MARTIN

Late of Gieves

53 and 53a HIGH STREET, HYTHE

Ladies and Gents' Outfitter

Agencies include the Names you know

AQUASCUTUM / ZAMBRENE
JAEGER / HENRY HEATH
MORLEY / FOWNES GLOVES

REGIMENTAL & ARMY DIVISIONAL TIES

★
LADIES & GENT'S KNITWEAR AND
A SPECIALITY AT 53a
★ ICES
★ TOBACCO
★ CONFECTIONERY

HYTHE MOTOR CAB CO. LTD

MOTOR & GENERAL
ENGINEERS

Hythe's Leading Service Stations

Office and Works:

**HIGH STREET & BANK STREET
HYTHE**

Phone - 66131/2

Service Station:

**Seabrook Garage,
Seabrook Road, Hythe**

Phone: 78467

HIGH-CLASS COMMERCIAL
PRINTERS

*This Programme Designed
and Printed by . . .*

F. J. PARSONS

(Kent Newspapers) Ltd.

84 HIGH ST., HYTHE
Tel. 66667

*Proprietors of the
Folkestone Hythe & District
HERALD, every Saturday morning*

●
*Folkestone & Hythe
GAZETTE, every Wednesday morning*

Head Office:
THE BAYLE, FOLKESTONE Tel. 2231

Bromanta
COATS
for girls with poise!

A lovely model
from the new
C.W.S.
Bromanta
range

*Charm
In COSTUMES*

*Fashioned and tailored
by experts at prices
you can afford.*

**See them at
the Fashion Store
TONTINE STREET**

FOLKESTONE **Co-operative** SOCIETY LTD.
BRANCHES AT HYTHE AND CHERITON