

CONSECRATION OF GUILDFORD CATHEDRALMAY 17th 1961.

A meeting was held on 21st March to make arrangements for the above ceremony. I give below an outline of the matters discussed.

FORM OF SERVICE AND TIMINGS.

1.30 p.m. General public and invited guests (except V.I.P.'s) arrive.

2.55 p.m. Princess Margaret and Mr. Antony Armstrong-Jones arrive at West Door.

3.0 p.m. Queen and Duke arrive at West Door, and, on entering, are met by the Bishop of Guildford, the Archbishop of Canterbury and the Cathedral Chapter.

This group of people form up in a three-sided square underneath the West Gallery and the "Petition to Consecrate" is presented in the form of a spoken address.

The Royal Party and the Clergy process up the Nave to their seats at the foot of the Chancel Steps.

The Bishop, having left the Cathedral after the Petition is presented, walks right round the outer wall beginning on the North side, and, keeping as close to the wall as he is able; he returns by the South side to the West Door where he knocks three times for entry. The doors are opened and he processes up the Nave to the Chancel steps.

The Service begins, the litany and prayers, etc., and the altar is duly consecrated.

The Bishop then signs a 'Deed of Consecration' at a table placed at the top of the Chancel Steps on the South side.

The Queen advances to the table and signs the Deed.

The table is taken to the Archbishop of Canterbury who also signs the Deed.

A fanfare of trumpets follow, and the whole congregation joins in a special arrangement by Vaughan Williams.

The Archbishop of Canterbury gives the Sermon.

.....Contd/

CONSECRATION OF GUILDFORD CATHEDRAL (Continued)

A final hymn and the Blessing conclude the Service, and the Archbishop and Royal Party process out.

CAMERA POSITIONS

All positions are fixed and are being arranged mutually between NRA, BBCOBT, and Television rots. There are four positions offered.

(1) OUTSIDE West Door

A rostrum is to be built by BBCOBT, to accommodate NRA, TV rots, BBCOBT, and it will be situated approximately 120 ft. from the West Door.

The position offers views of all arrivals, general pictures of the expected crowd of general public to whom the service will be relayed, the Bishop walking by the South wall and knocking on the West Door.

(2) INSIDE West Door. (under West Gallery).

A rostrum is to be built to accommodate NRA, TV rots and 1 still photographer. BBCOBT will operate from a mobile dolly.

The position offers pictures of all arrivals, the greetings of the Royal Family and the reading of the Petition. Space is limited, but a sound camera could be used if desired. Lighting will be arranged in this area.

(3) WEST GALLERY

Good general views and the procession out are obtainable from this elevated position, which is in the centre of the Gallery.

BBCOBT are in the centre, NRA and TV rots on either side and 3 still photographers alongside the film cameras.

.....Contd/

CONSECRATION OF GUILDFORD CATHEDRAL (Continued)

(4) EAST END OF NAVE

Two restrums are to be built at a height of 12 ft. against the North and South pillars at the East end of the Nave. BBCOBTV have a camera sited on each stand, and NRA and TV rota draw for positions on either the North or South stand, there being room for one film camera and one still photographer only in addition to the BBCOB camera on each stand.

The position is for a sound camera to film proceedings in the area of the Chancel Steps. The cameraman will require a hand camera, in addition, to obtain a picture of the procession coming in, the only way to do this unless a further stand is built specially for this purpose.

Lighting within the body of the Cathedral will be arranged in the Chancel area only, the Cathedral being generally at a reasonable level of daylight.

REHEARSALS

May 8th at 3 p.m.

May 15th at 7.30 p.m.

PASSES

From Buckingham Palace.

CAR PARKING

Access will be allowed to the West Door in the morning to unload equipment, and parking by special label will be on the North side of the approach road to the Cathedral.

J. TURNER

X-FOI 001

*With compliments
from the*

**CHURCH
INFORMATION
OFFICE**

**RADIO and TELEVISION
DEPARTMENT**

**CHURCH HOUSE . DEAN'S YARD
WESTMINSTER S.W.1
*Sullivan 7271***

CONSECRATION OF GUILDFORD CATHEDRAL

(see Appendix A.)

TV.O.B., Cine and TV. Newsreels and Press camera positions, as agreed with the Provost of Guildford Cathedral, a representative of the Press Office of Buckingham Palace, BBC.TV., Cinematograph and TV. Newsreels and Newspapers Proprietors' Association and local Press, at a meeting held on 21st March 1961 at Guildford Cathedral.

Position No.1. (under West Gallery)

Rota party of:

- 1 Still photographer
- 1 Newsreel Association (Cine)
- 1 Newsreel TV.
- BBC. O.B. position.

Position No.2. (West Gallery)

Rota party of:

- 3 Still photographers -
(2 National, 1 local)
- 1 TV. Newsreel camera
- 1 Cine " "
- 1 live O.B. camera (BBC)
- Richard Dimbleby (commentator)
- 1 S.P.C.K. hand camera,
(standing position)
- 3 Court reporters
- Reporters - (National and local)

Position No. 3. (Pillar position specially built by BBC.)

Rota party of:

- 1 live O.B. camera
- 1 Newsreel Cine or TV camera
- 1 N.P.A. Still photographer

Position No. 4. (Pillar position specially built by BBC.)

Rota party of:

- 1 live O.B. camera
- 1 Newsreel Cine or TV camera
- 1 N.P.A. Still photographer

Position No.5. (Organ Loft)

Rota party of:

- 1 S.P.C.K. cameraman and assistant.
- 1 Still camera (local)
- 1 Church Information Office photographer

Position No.6. (Outside position - roped enclosure)

Rota party of:

- 2 live O.B. cameras (BBC.)
(specially built)
- 4 Still cameras
- 1 Newsreel (Cine) camera
- 1 " (TV) "
- Reporters (numbers to be decided)
- 1 S.P.C.K. cameraman

Position No. 6a. (no passes required).

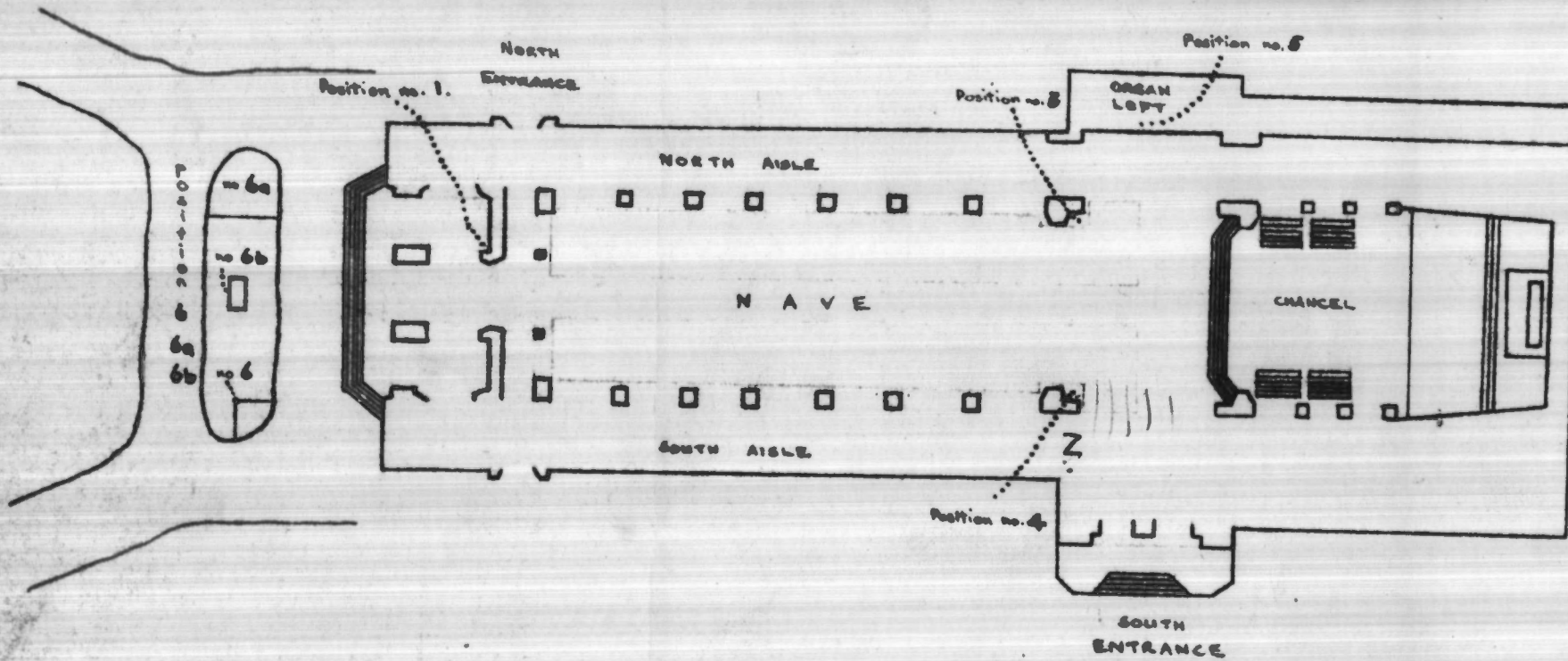
Roped enclosure for free lance reporters, photographers, etc.

Position No. 6b.

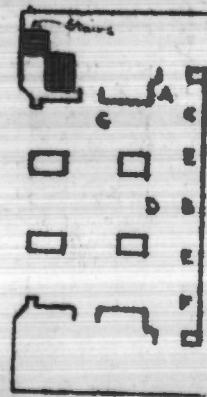
Rota party of:

- BBC. (O.B.) camera.

CONSECRATION OF GUILDFORD CATHEDRAL: CAMERA POSITIONS

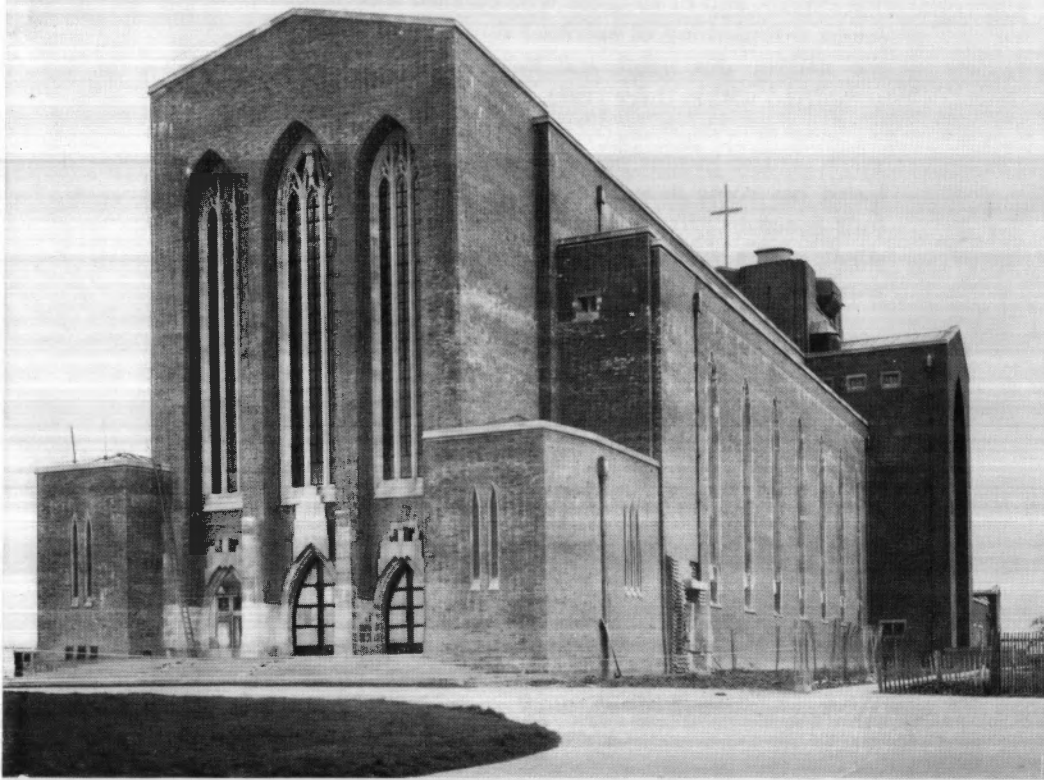


WEST
GALLERY
Position no. 2



- A Richard Dimbleby
- B B.B.C. (O.B.) camera
- C 3 still cameras
- D Press Reporters
- E Cine and T.V. Newsreel cameras
- F 3 Court Reporters
- G S.P.C.K. Cameraman (standing position)

May 17



"GUILDFORD CATHEDRAL, THE WEST END
AS IT IS NOW."



"GUILDFORD CATHEDRAL, WEST END
AS IT SHOULD BE."

Twenty-five years ago Archbishop Lang laid the foundation stone of Guildford Cathedral—the first Cathedral in the South of England to be built on a new site since the Middle Ages. Work was brought to a stop during the war and the immediately ensuing years. Now, thanks to gifts from all over the world, the Choir, the Transepts and the Nave have been built and the Cathedral is ready to be used for worship. It is to be consecrated on 17th May 1961.

But the Cathedral is not yet finished. It lacks a Sacristy (£22,700), which is greatly needed for the day-to-day life of the Cathedral, a Lady Chapel (£46,500), the “garths”—that is the projecting arms shown in the forefront of the picture (£42,000), and the Tower (£95,000) designed by the architect as the dominating feature of the sky line. These four features together require £206,000 of new money, over and above sums already promised under covenant, most of which must be used to repay loans without interest made by friends of the Cathedral.

As the rate of progress has quickened in the last 18 months, and the Nave has neared completion, there has been a rising tide of interest in the Cathedral. In 1960 there have been more visitors and we received more gifts than in any previous year.

There is a growing wish that the work of building should continue without a pause, and that the Cathedral should be completed as soon as possible. This has strong support from the New Cathedral Council, from the diocese and parishes, and from voluntary workers who give so much of their time to the Cathedral.

We are confident that the service of Consecration on 17th May in the presence of H.M. The Queen will give added impetus to this movement and will arouse national interest in the Cathedral. Given the continued support of our friends, and of all those who care for this project and see in it something of spiritual significance in the life of the nation, this great and beautiful building can be completed within three years.

The greater part of the £540,000 so far contributed has come in small amounts though we have had four generous gifts of £10,000 each. All gifts, large and small, which will enable us to carry through this great work without delay, will be most gratefully received.

Cheques should be made payable to Guildford New Cathedral Fund and sent to Miss E. Iredale, O.B.E., at Diocesan House, Guildford.

BRIDGES

ARTHUR FFORDE

HAMILTON OF DALZELL

May 1961